

PART OF THE NE 1/4, OF SEC. 34, T.6N., R.1W., S.L.B. & M.

DENVER PLACE ADDITION

BLOCKS 7 & 8

TAXING UNIT: 25

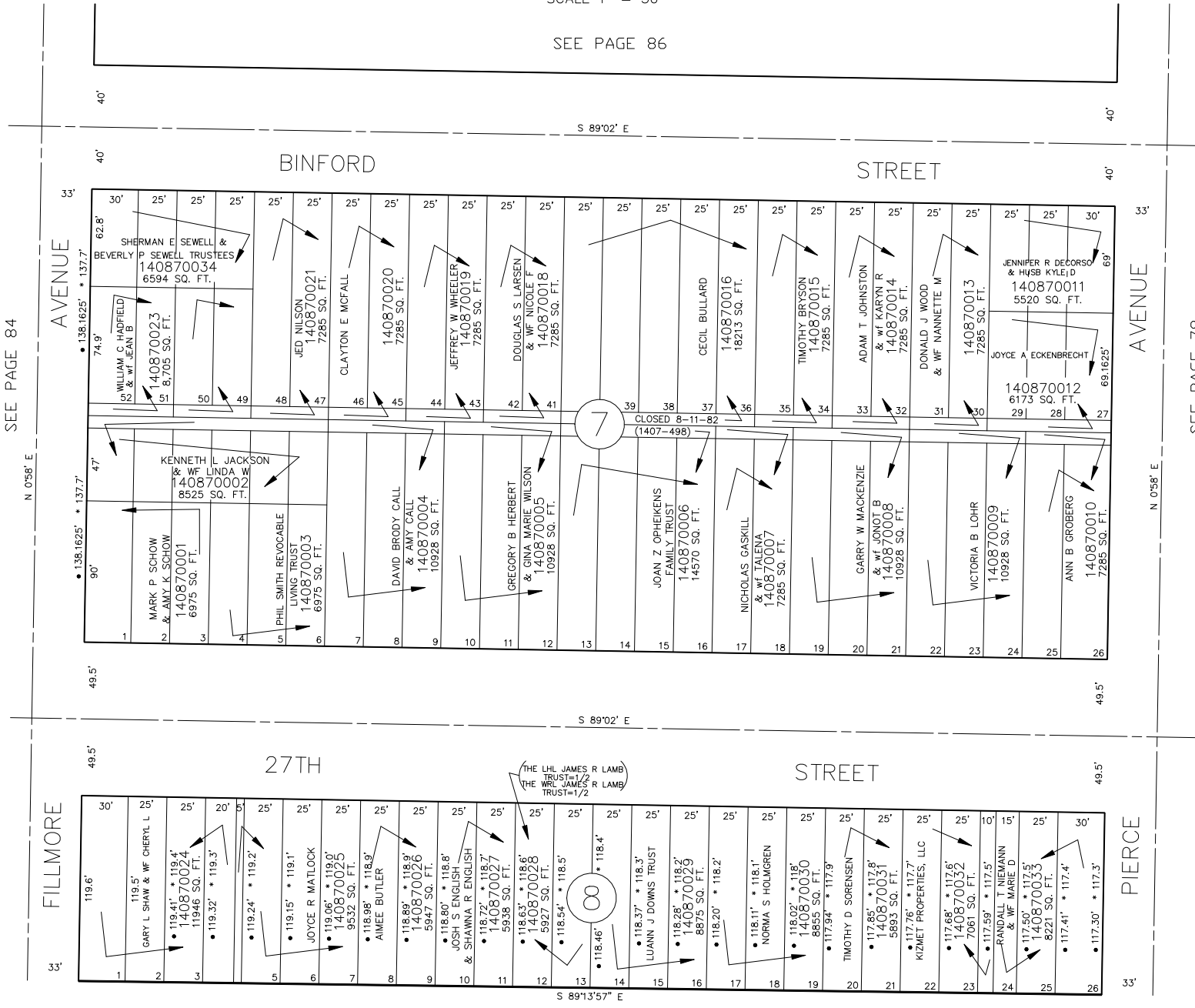
IN OGDEN CITY

SCALE 1" = 50'

SEE PAGE 86

SEE PAGE 84

SEE PAGE 78



• OGDEN CITY ENG. DEPT. PLATS
• ORIG. DED. PLAT

SEE PAGE 96

FOR COMPLETE ENG DATA SEE ORIGINAL DEDICATION PLAT IN BOOK 2, PAGE 11 OF RECORDS.